

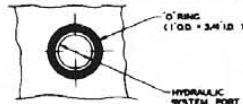
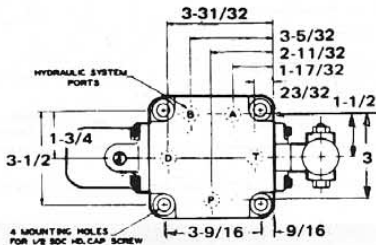


TASK-FORCE VALVES

4-WAY CONTROL VALVES, Spool Type 10,000 P.S.I.

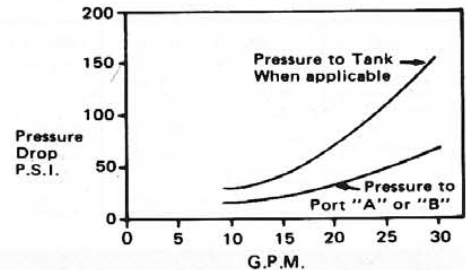
SUB PLATE MOUNTED, 30 G.P.M.

Heavy reinforced construction allows these valves to operate continuously at 10,000 p.s.i. with 25 G.P.M. flow at 20 feet per second. A variety of spool types (see chart) provides flexibility to meet your requirements for rugged applications. Spool travel is approximately 5/16" from center in each direction. Sub plate mounting enables removal of valve without disturbing piping, and minimizes distortion of valve body, especially when pipe fitting must be used.

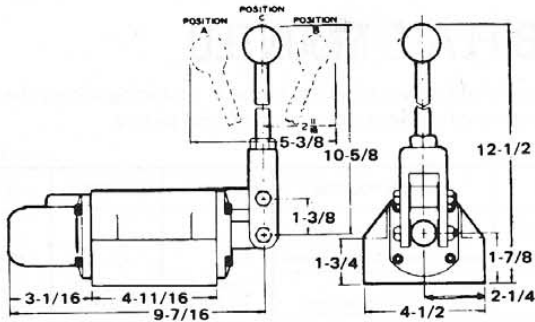


Bottom View of Valve (Showing Hydraulic Port with "O" Ring)

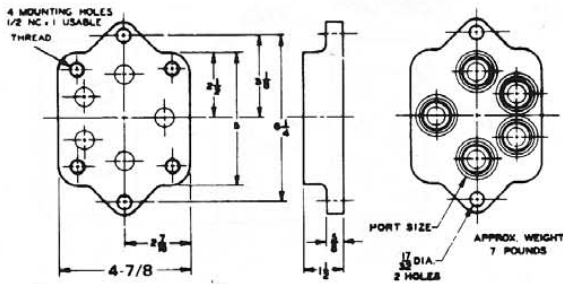
Typical Pressure Drop Versus Flow Characteristics



SEAL KIT 82075



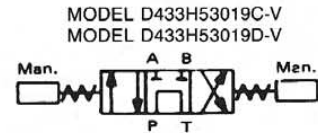
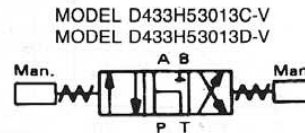
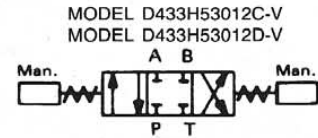
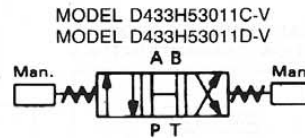
Note:
 "T" or tank port can be subjected to 10,000 P.S.I. pressure.
 "D" or drain port must always be connected directly to reservoir.



ORDER SUB-PLATE SEPERATE

PART NO.	PORT SIZE	TUBING SIZE	WT.
427006	3/4-14 NPTF	7/8 Tube	7 lbs.
427007	1-3/16-12 UNF-2B	7/8 Tube	

HYDRAULIC SYMBOLS



SPRING CENTERED

MODEL	CENTER POSITION	POSITION A	POSITION B	WT.
D433H53011C-V	Open center - all ports open	Pressure to Port A and Port B To Tank	Pressure to Port B and Port A To Tank	19 1/2 Lbs.
D433H53012C-V	Closed center - all ports closed			
D433H53013C-V	Port B closed - A open to pressure and tank			
D433H53019C-V	Pressure Open to Tank - A and B Closed			

3 POSITION DETENT - AT "A"-"B" & CENTER

MODEL	CENTER POSITION	POSITION A	POSITION B	WT.
D433H53011D-V	Open center - all ports open	Pressure to Port A and Port B To Tank	Pressure to Port B and Port A To Tank	19 1/2 Lbs.
D433H53012D-V	Closed center - all ports closed			
D433H53013D-V	Port B closed - A open to pressure and tank			
D433H53019D-V	Pressure Open to Tank - A and B Closed			