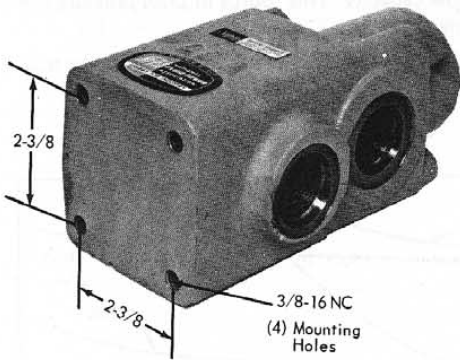




TASK-FORCE VALVES

CHECK VALVES, Inline Pilot Operated VPPS SERIES 10,000 P.S.I., 40 G.P.M.



CLOSED POPPET CONSTRUCTION

Spring-closed poppet allows free flow in direction indicated, but reverse flow can be obtained by holding poppet open. A smaller port in the cap of this valve provides a convenient inlet for auxiliary circuits, such as the high pressure connection for a high-low system.

HOLD PRESSURE

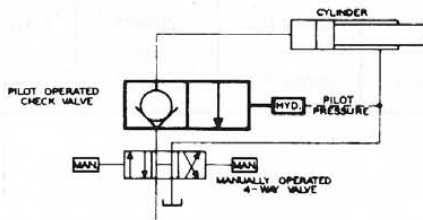
The VPPS series valves act as a check valve to hold pressure in a cylinder.

DISPOSES LARGE OIL VOLUME FLOW

Up to 40 G.P.M. of Hydraulic Oil flow through these valves.

DECOMPRESSION

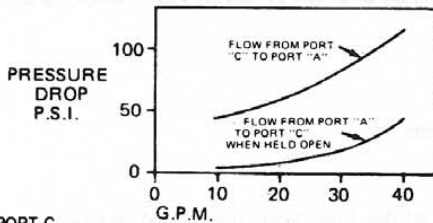
Rodgers VPPS-631052 valves automatically decompress full cylinder pressure preventing high pressure shocks due to sudden full opening of the check valve.



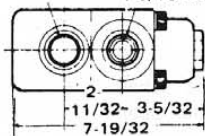
SEAL KIT 82077

TYPICAL CIRCUIT SHOWING THE USE OF A PILOT OPERATED CHECK VALVE TO HOLD PRESSURE WHEN THE SPRING CENTERED VALVE HANDLE IS RELEASED.

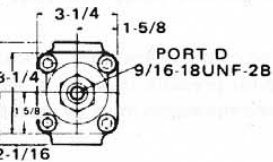
Typical Pressure Drop Versus Flow Characteristics



PORT A 1-3/16-12UNF-2B
PORT C 1-3/16-12UNF-2B



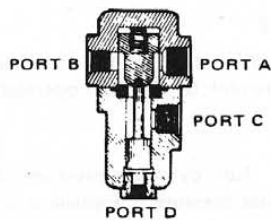
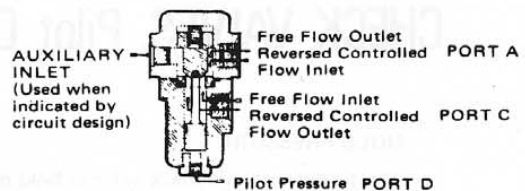
Pilot Pressure Port
Max. Pilot Pressure - 1000 p.s.i.



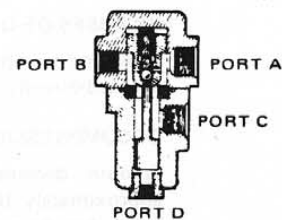
7/8-14 UNF-2B
PORT B

Approximate weight 15-1/2 lbs.

PILOT OPERATED CHECK VALVE



MODEL VPPS531052-V
PILOT OPERATED CHECK VALVE
80% SYSTEM PRESSURE TO OPEN



MODEL VPPS631052-V
COMBINATION PILOT OPERATED CHECK VALVE AND DECOMPRESSION VALVE
10% SYSTEM PRESSURE TO OPEN