



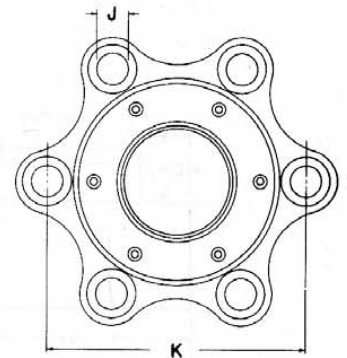
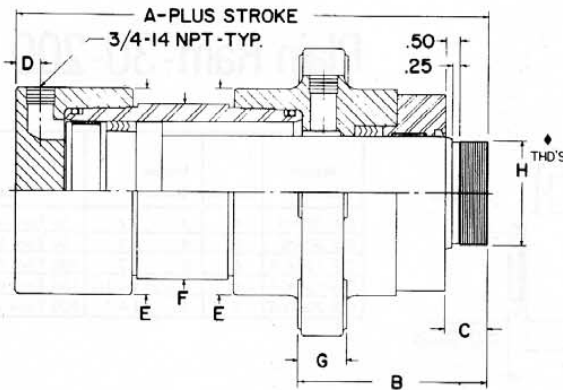
TASK-FORCE CYLINDERS

DOUBLE ACTING

MINIMUM MAINTENANCE — Heavy-wall seamless steel tubing, used in the design of these cylinders, is honed to a smooth 12 — 16 micro finish to extend packing life. Task-Force double acting cylinders are designed to withstand side load and full operating pressure.

COMPLETELY FACTORY TESTED— Quality control at Rodgers is tougher than it has to be. Each Task-Force hydraulic cylinder is completely tested at rated capacity for structural soundness and leak resistance.

THREADED DESIGN, Front Flange Mounting* 30-600 Tons



HIGH CYCLE CONSTRUCTION - Glass reinforced nylon bearing ring in the front head packing gland and piston to allow tighter tolerances and increased life. The finest heat treated cast alloy steel heads are used front and rear. They combine with threaded design to provide maximum resistance to fatigue, side load and abuse. Chevron ("V" packing) is used throughout.

A flat ram cap included with cylinder.

* These cylinders also available with rear flanges or as "plain" models. Consult Factory for details.

LARGE RAM

Model No.	Stroke	Cyl. Bore	Rod Dia.	Maximum Push Tonnage	Maximum Pull Tonnage	Dimensions										WT.	**	Seal Kit
						A	B	C	D	E	F	G	H	J	K			
VPC-4CF-3.13x14	14	4	3/8	50 Tons at 7958 P.S.I.	2.5 Ton @ 1000 P.S.I.	10.94	5-15/16	1 1/8	1 1/8	6-9/16	5.12	1 1/8	3	1/2	7 1/2	143	4	199898
VPC-5CF-4x14	14	5	4	75 Tons at 7640 P.S.I.	3.5 Tons @ 1000 P.S.I.	11.88	6 1/4	1 1/2	1 1/2	7 1/8	6.25	1 1/2	3 1/2	1 1/2	9 1/2	211	6	199899
VPC-6CF-5x14	14	6	5	100 Tons at 7073 P.S.I.	4.3 Tons @ 1000 P.S.I.	12.50	7	1 3/4	1 3/4	8 11/16	7.38	1 3/4	4 1/2	1 3/4	11	267	9	199900
VPC-6.5 CF-5.5x14	14	6 1/2	5 1/2	150 Tons at 9041 P.S.I.	4.7 Tons @ 1000 P.S.I.	13.31	7 1/2	1 3/4	1 3/4	9 5/16	8.50	1 3/4	4 3/4	1 3/4	11 1/2	382	12	199901
VPC-8CF-6.5x14	14	8	6 1/2	200 Tons at 7958 P.S.I.	8.5 Tons @ 1000 P.S.I.	13.00	7	1 3/4	1 3/4	11	10.06	2	6	1 1/2	14	571	16	199902
VPC-10CF-7.5x14	14	10	7 1/2	300 Tons at 7639 P.S.I.	17 Tons @ 1000 P.S.I.	16.62	8 1/2	1 3/4	1 3/4	13 1/2	12 1/2	2 1/2	7 1/2	1 3/4	17 1/2	942	24	199903
VPC-12CF-7.5x14	14	12	7 1/2	400 Tons at 7073 P.S.I.	34.5 Tons @ 1000 P.S.I.	17.50	8 3/4	2	1 1/2	16 3/4	14 1/2	3	7 1/2	2 1/2	20 1/2	1338	29	199904
VPC-14CF-8x14	14	14	8	600 Tons at 7795 P.S.I.	51.8 Tons @ 1000 P.S.I.	18.62	10 1/2	2 1/2	1 1/2	19 1/2	17 1/2	3 1/2	7 3/4	2 1/2	24	2066	34	199905

Tonnages at other strokes

† Consult factory for maximum push stroke at other tonnages.

* Weight for 14" stroke.

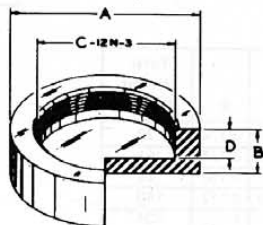
★ Consult factory if additional pull pressure is required.

** Weight for each additional inch of stroke.

◆ Thread — "H" — 12 N:3

Dimension E is a Rough Casting Dimension.

FLAT RAM CAPS for cylinders on pages 2 and 3.



FLAT RAM CAP

CYL. I.D.	RAM DIA.	A	B	C	D	PART NUMBER
3	2	2-3/8	2	1-3/4	1-1/2	419060
4	3-1/8	4	1-1/2	3	1	419051
5	4	4-1/2	1-1/2	3-3/4	1	419052
6	5	5-1/2	1-1/2	4-3/4	1	419053
6.5	5-1/2	5-1/4	1-3/4	4-1/4	1-1/4	419054
8	6-1/2	7	1-3/4	6	1-1/8	419055
10	7-1/2	8-1/4	1-7/8	7-1/4	1-1/8	419075
12	7-1/2	8-1/4	2-1/8	7-1/4	1-3/8	419076
14	8	9-1/2	2-7/8	7-3/4	2-1/8	419077